

### Important Dates

Friday 3 July – Last day of Term 2  
Monday 20 July – School Development Day (Students do not attend)  
Tuesday 21 July – First Day of Term 3 for students  
Friday 24 July – School Photos  
Thursday 30 July – Hockey program (selected students)  
Monday 3 August – Circus program (selected students)  
Wednesday 5 August – WADSA Sport program (selected students)  
Friday 25 September – Last day of Term 3  
Tuesday 13 October – Students commence Term 4

## Thank you Bunnings

This semester we were given a donation of pots, soil and seedlings from Bunnings, Wangara. Each student was given a pot to decorate for their family. Some classes have already sent their pots home, while others are still designing and decorating theirs and they will come home at a later stage.

Across the centre we used paint, stickers, foam shapes, sequins and pictures to help create our designs. The stickers used in C7 and C1 created an individual style for each student, while the geometric shapes created using masking tape in Room 2 and C2 gave a bold, colourful finished product.

The students enjoyed putting on gardening gloves and being involved in scooping the potting mix out of the bag into their pots, and placing their chosen seedling into their pot. Hopefully with some water and sunshine the seedlings will grow at your homes and it will be a nice reminder of your child's enjoyment at school.

We would like to thank Bunnings, Wangara for making contact with us and organising this kind donation.

*Jodanne Walker*



Senior Mentor Ned unloaded the supplies from Mrs Walker's car and delivered them to the classes. Thank you Ned!







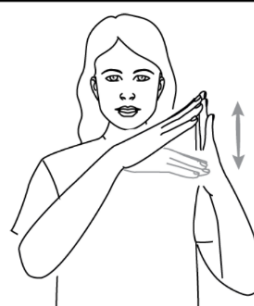
### Key Word Sign

This fortnight we are working on the signs for 'mine' and 'paint'.



mine

Place open dominant hand on chest, palm facing body, twice.



paint

Hold open hands, palms facing, in front of body, at shoulder height. While bending fingers of dominant hand at third knuckle, move fingertips down non-dominant palm and back up and down twice. Can also be with non-dominant palm up.

### ASEPA Parent Survey

ASEPA (the Australian Special Education Principals Association) have partnered with the Australian Catholic University to survey parents of students with disabilities who attend special schools, centres and programs. The survey aims to investigate the different perspectives of families and to highlight measures by which their voices might be more included.

Your child will have brought home letters inviting you to participate in the survey. The link is:

[https://acu.qualtrics.com/jfe/form/SV\\_0pGAoekNmVR7VB3](https://acu.qualtrics.com/jfe/form/SV_0pGAoekNmVR7VB3)



## Belridge Secondary ESC

Belridge Secondary ESC are hosting a Parent Information Session on Friday 7 August from 9.15 to 10.30 am. Parents whose children are likely to make the transition to high school at Belridge are encouraged to attend. To rsvp please ring 9408 8050 by the 4<sup>th</sup> August.



### Fruit Box

We were very surprised last week when Mark from the Coffee Tube in Kingsley dropped in a huge box of fruit for the students. Thank you to Mark and to Vanessa Edwards who nominated our Centre for this treat. Lily served up samples to all of our students on the Tuesday which still left plenty for the students to snack on for the rest of the week.

Quote of the day from Orlando was "Mmm I love this apple!" said with very convincing gusto.

### School Photo Day

Don't forget school photos on the first Friday of Term 3. We are looking forward to the new, less formal group shots. Please remember to return your envelope with correct payment before the 24<sup>th</sup> of July or order online. If you did not receive the Kapture order envelope with details, please contact Brooke in the front office.

### Special Children's Christmas Party

Don't forget to contact Brooke to order a ticket for your child to attend the annual Special Children's Christmas Party to be held on Saturday 28<sup>th</sup> November at the Perth Convention and Exhibition Centre. [Brooke.McKenna@education.wa.edu.au](mailto:Brooke.McKenna@education.wa.edu.au)

### Therapy

Thank you to all our families for their cooperation with our new therapy procedures. We have been very heartened to hear from families about how much some of you are enjoying being more directly involved with observing your child's therapy at home. Applications for at-school therapy are currently being processed and you will receive an email informing you of the outcome. Where therapy at school is approved, please be aware that it will be regularly reviewed and subject to availability of space at requested times.

### Drama in Room 2



Drama sessions are always lots of fun in Room 2. The students have been studying fairy tales and love acting out the stories – especially if they have costumes and props.

*Shaheer role plays climbing the beanstalk.*

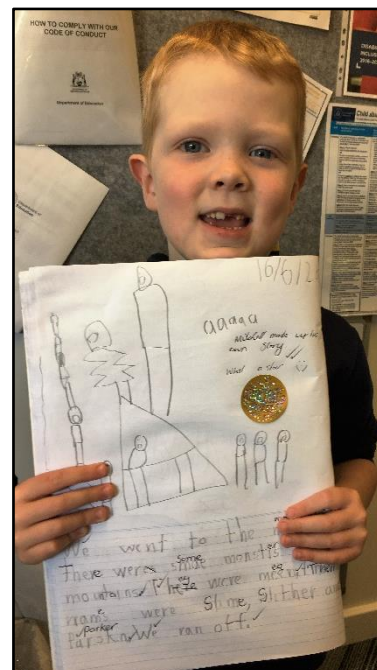
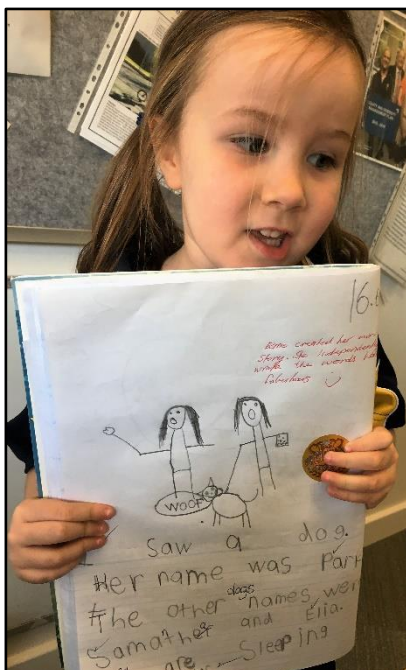
*Shaheer, Toby and Georgia perform in front of an appreciative audience.*





## Great Workers

I never tire of seeing all the fabulous work that comes up to the front office. Seeing this work and reading all the semester reports has been very reassuring. Despite the disruptions of COVID-19, our students have continued to work hard and achieve good results. Well done everyone!



## Deputy Principal

Parents will be aware that student enrolments at Creaney ESC have continued to rise over recent years. We have gone from having 30 students in 2016 to 59 in 2020. The need for a Deputy Principal has become more urgent and we will be advertising a position at the end of the year. In the meantime, we are very fortunate that Storm Breen has been selected to fill this role in an acting capacity for the rest of 2020. Storm has considerable experience as a Deputy Principal in New Zealand and I am looking forward to benefitting from Storm's input and expertise.

We are also very fortunate that Natasha Tassone, who worked here full time last year, is now available to take up Storm's teaching role. Natasha was meant to be travelling the world this year but COVID-19 interrupted those plans. Storm and I both feel very confident that she is leaving her classes in very good hands.

Term 2 is ending in a very wet and windy way and I would like to wish all our families a safe, happy and warm holiday. It has been a most unusual semester and we are all looking forward to a return to what now seems to be called the 'new normal'. Our community has worked so cooperatively and positively for the benefit of our students and I can never find the words to adequately thank our wonderful staff and parents. Perhaps **YOU ROCK!** says it all.

Kind regards,

Cat Marcoolyn

[Catriona.Marcoolyn@education.wa.edu.au](mailto:Catriona.Marcoolyn@education.wa.edu.au)

## Makuru

**Makuru** is the season from June to July. It is the time of the first rains. It is the coldest and wettest time of the year and when strong winds and storms tend to happen. People moved inland away from the coast for hunting and shelter in Makuru. They would eat tuberous plants and hunted swan. Makuru is also the season of fertility as animals prepare for breeding in the coming season. Pairs of Wardongs (ravens) fly together and flocks of Mali (black swans) prepare to nest.